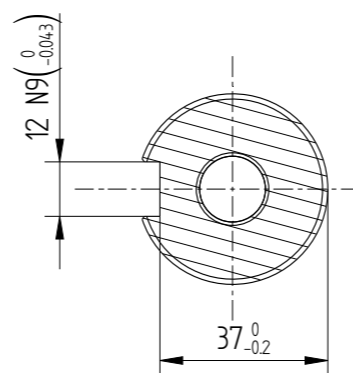
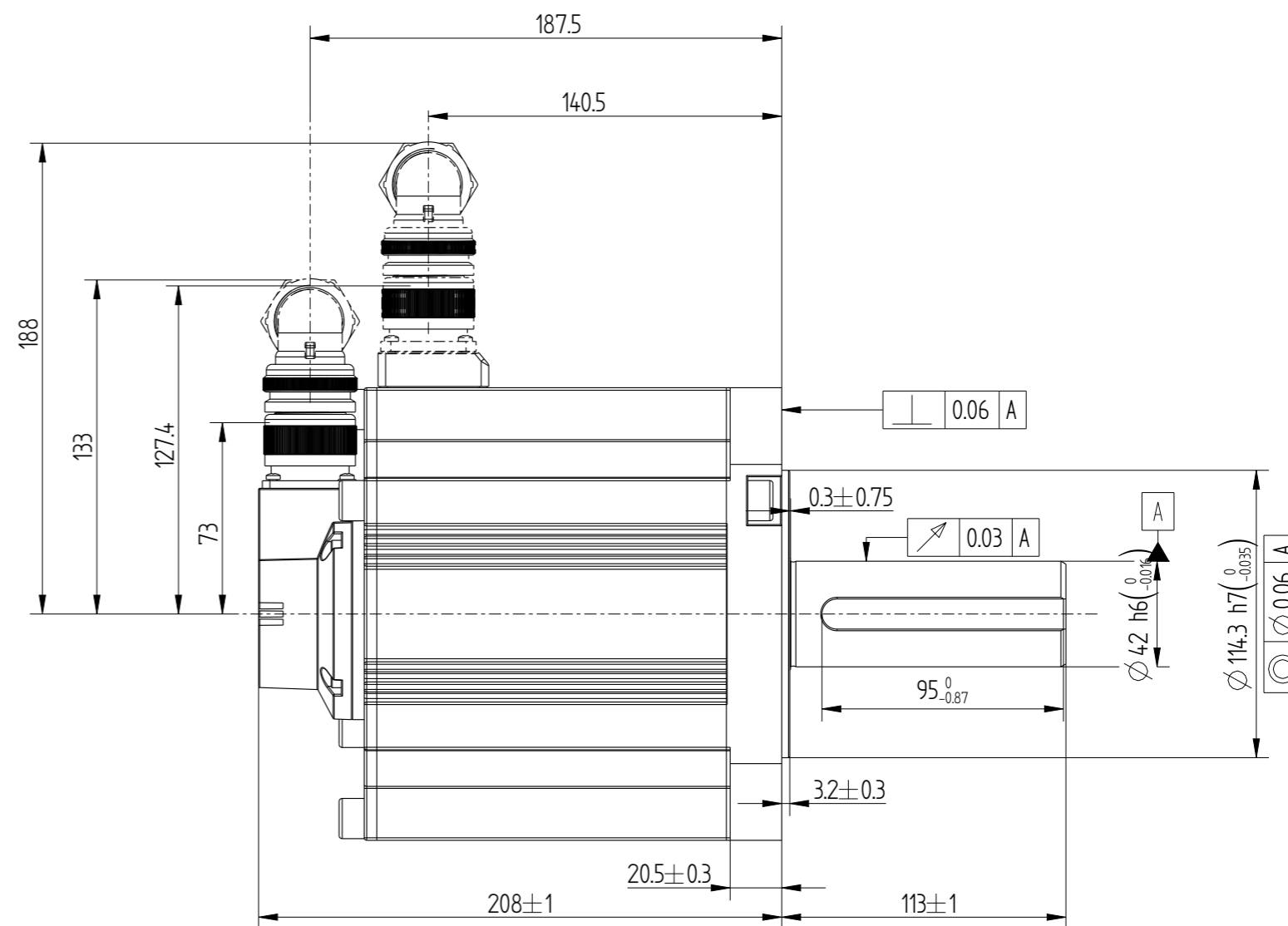
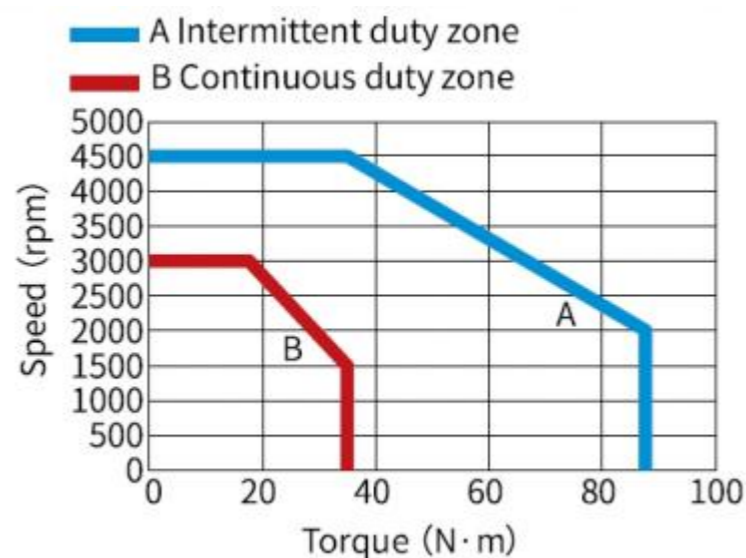


Basic function parameters	
Rated power kW	5.5
Rated voltage V	380
Rated current A	20.7
Peak current at rated speed A	52
Rated torque Nm	35
Peak torque at rated speed Nm	87.6
Rated speed rpm	1500
Max speed rpm	4500
Rotor inertia $\text{kg} \cdot \text{cm}^2$	$86.9 \pm 10\%$
Encoder resolution	23bit
insulation class	F(155)
Protection level	IP67
Static torque of brake Nm	/
Brake power supply V	/
Brake backlash ^o	/
duty cycle	S1
Radial load N	≤ 1764
Axial load N	≤ 588

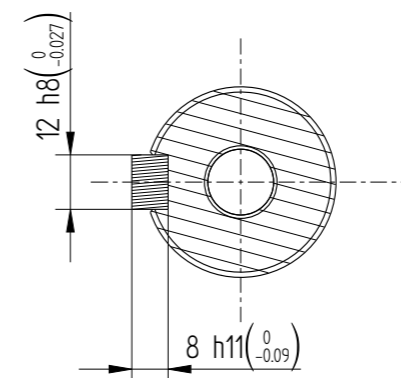
Technical drawing of the front view of a pump assembly. The drawing shows a circular pump body with a central shaft and a top-mounted motor. Key dimensions and features include:

- 2-M6 mounting holes
- Central shaft diameter: $\varnothing 207$
- Outer diameter: $\varnothing 200$
- 4- $\varnothing 13.5EQS$ mounting holes
- Top flange diameter: M16 ∇ 32
- Top flange thickness: 36.5°
- Top flange angle: 45°
- Top flange radius: R30.5
- Total width: 180 \pm 0.3

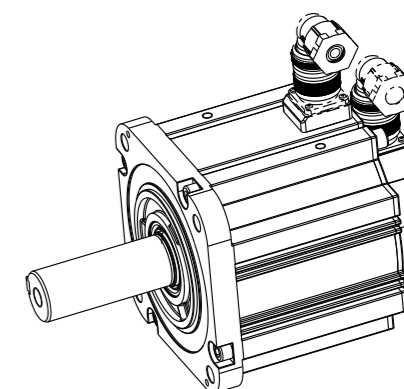
parameters




Dimension of shaft end



Dimension of shaft end with key



01118005-WX

Mark


INOVANCE

MS1H3-55C15D-A331R-INT